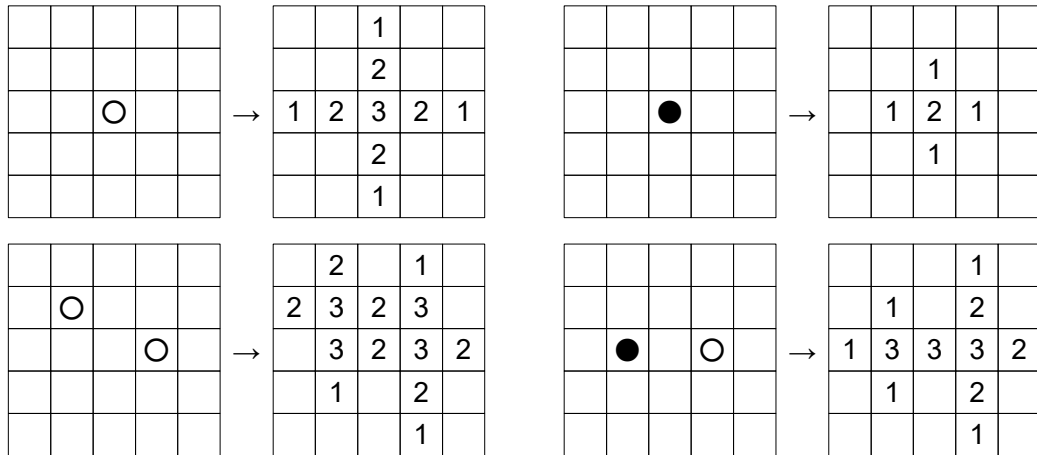


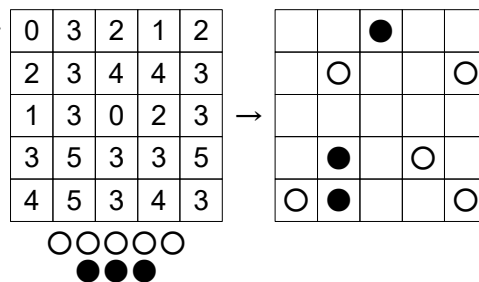
Lights Places

- Look at each cell as a room. From a brightness of each room, find fluorescent lights and light bulbs(count of these lights are shown under the problems.)
- A fluorescent light (○) has brightness of 3 and a lightbulb (●) has 2. The lights reaches horizontally and vertically, and brightness gets one fewer. The number in each cell is the sum of brightness (see samples.)

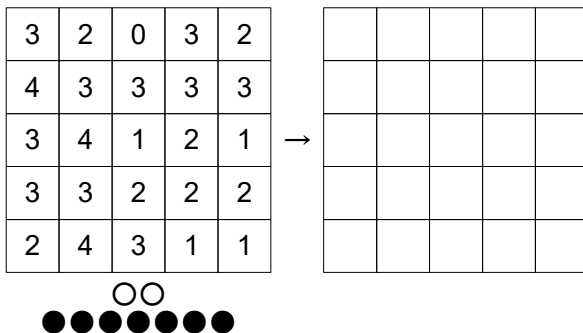
<samples>



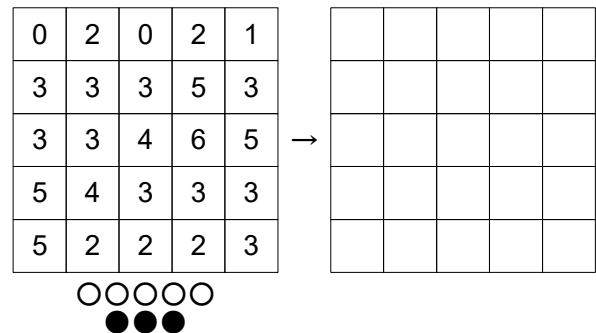
<example>



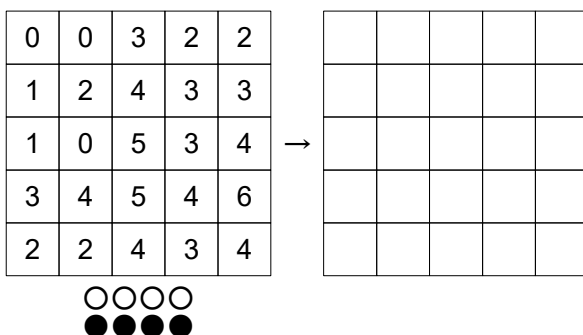
(1)



(2)



(3)



(4)

